

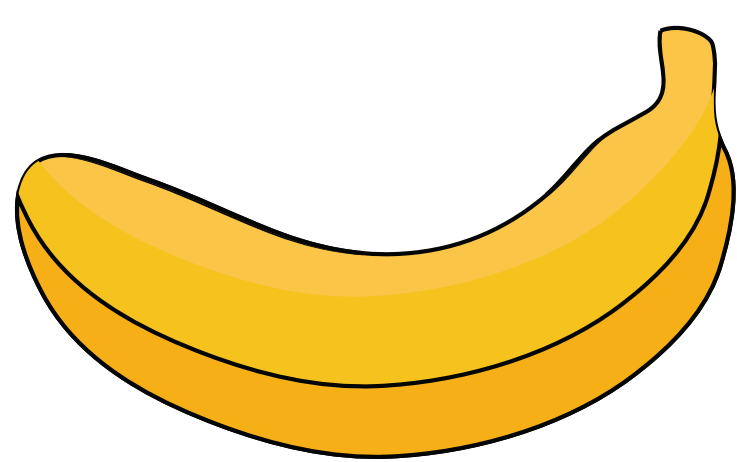
HOW TO PRIORITISE

Weighted Shortest Job First (WSJF) is a prioritization model used to sequence jobs (eg., Features, Capabilities, and Epics) to produce maximum economic benefit.



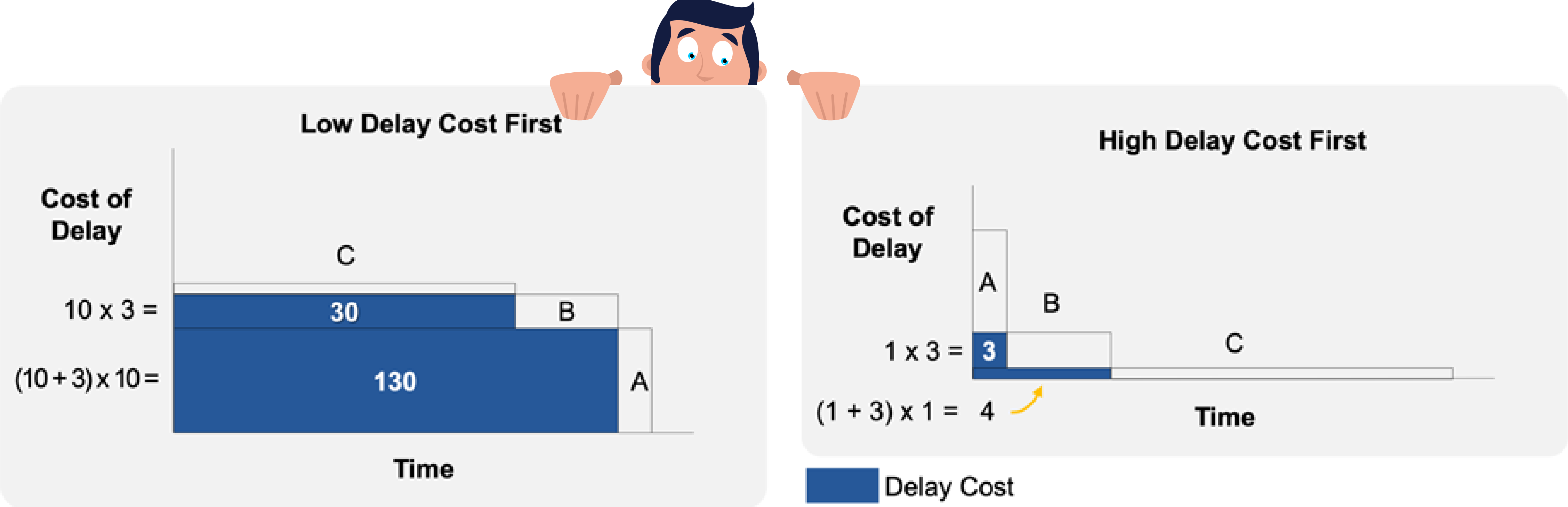
Cost of Delay

WSJF =



Job size

ORDERING BY WSJF WILL REDUCE THE HIDDEN **COSTS** WE PAY:



"If you only quantify one thing, quantify the Cost of Delay." - Don Reinertsen



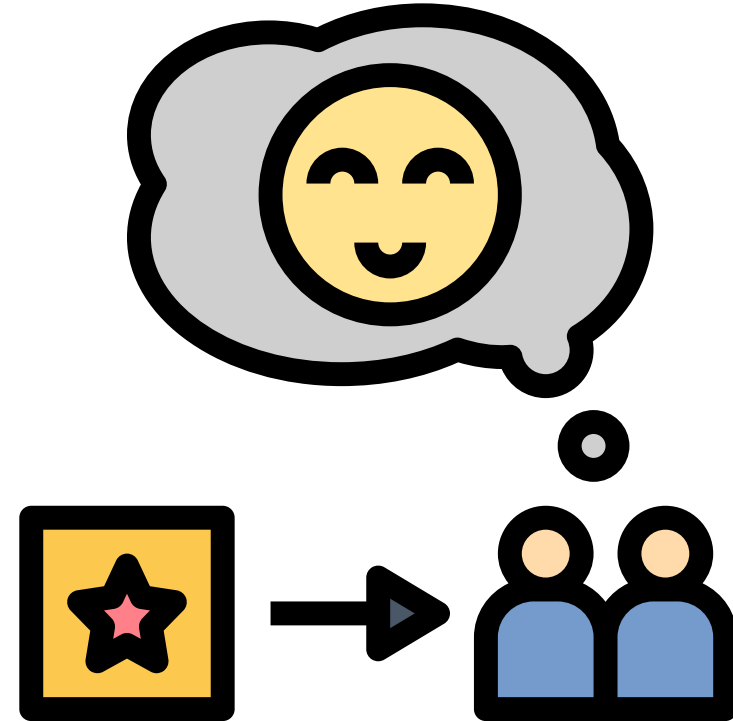
Cost of Delay

=



Time Criticality

+



User or Business Value

+



Risk Reduction or Opportunity Enablement

Source: <https://www.scaledagileframework.com/wsjf/>

