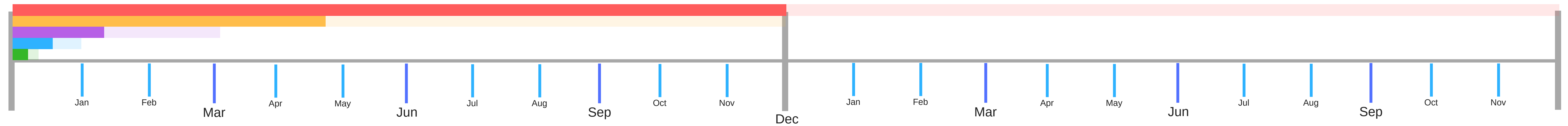


Vision

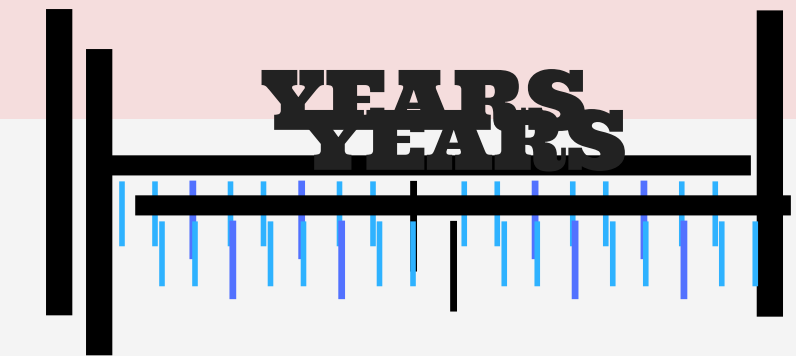
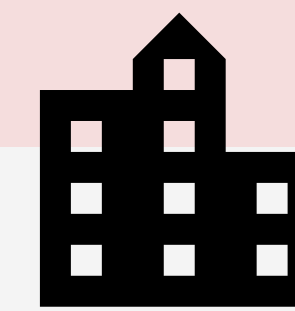
2020

2021



Capability

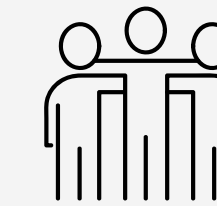
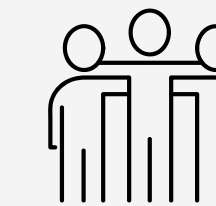
- A high-level description of a very large piece of work, written in business language that details the value of enabling the capability. Typically called out in an organisation's business plan or similar strategy document(s)
- Delivers on the **Vision**, delivered by **Initiatives**



STORE ALL
WORK IN THE
CLOUD

Initiative

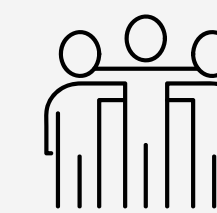
- A major component of a **Capability**, written in business language at a high level that details the value of completing the initiative. Often requires a business case as it represents substantial investment.
- Delivered by **Epics**



SHIFT WORD
FUNCTIONALITY
TO CLOUD-FIRST
STORAGE

Epic

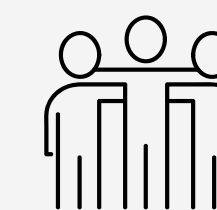
- User-focused unit of work that is considered complete when the minimum viable version of the epic is created (so that it can be tested and later iterated on - not so we can do the minimum and forget about it), typically written in *Epic Hypothesis Statement* format
- Delivered by **features**, **stories**, tasks



SETUP CLOUD
STORAGE SERVICE
ON USER DESKTOPS

Feature

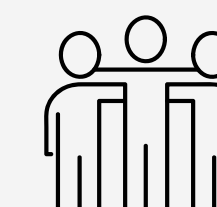
- Typically a sub-part of an **Epic** (simpler, smaller, sub-epic)
- Delivered by **Stories**
- Collects stories together by theme



GET ONEDRIVE UP
AND RUNNING ON
X360 DEVICES

Story

- Typically - but not always - an atomic component of an **Epic** (can also stand alone / be an orphan). Ideally, Stories represent the maximum size of what is necessary to release to customers. User-focused (teams might use "Tasks" instead when the work is not user focused / doesn't deliver value to a user)
- Most commonly written in standard "As a <person>, I want <something> so that <context>" format



INSTALL ONEDRIVE
INTO TEST
ENVIRONMENT